

LAMINETTE

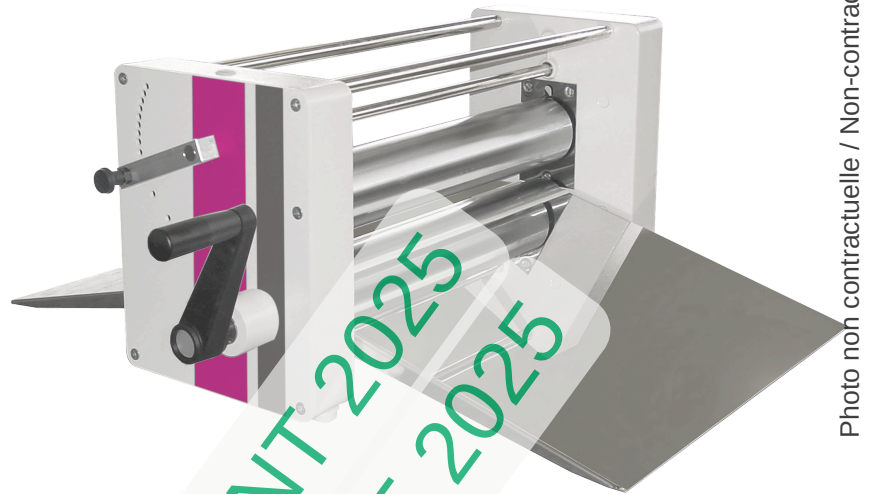
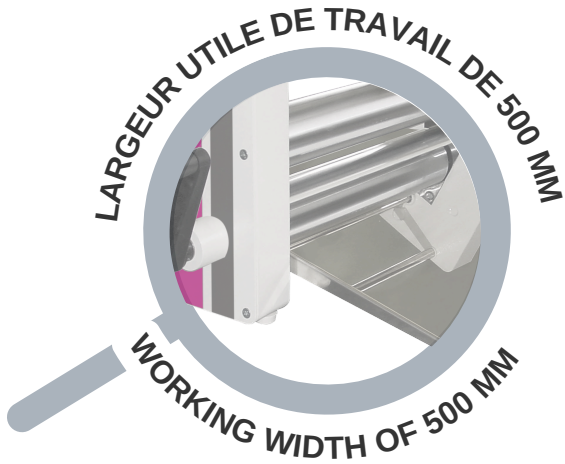


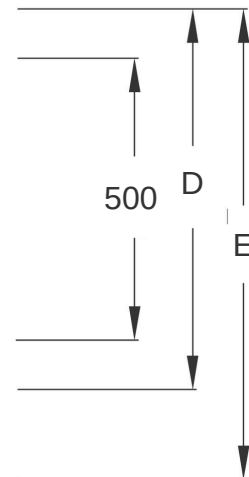
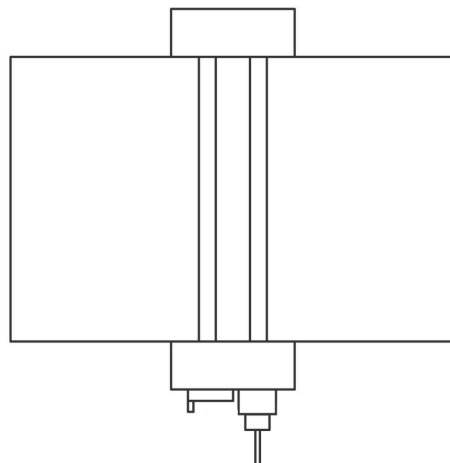
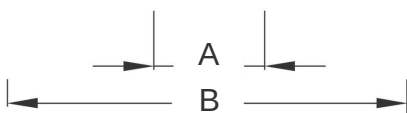
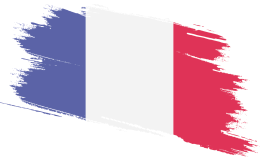
Photo non contractuelle / Non-contractual photo

À poser sur table

Largeur utile de travail : 500 mm  
Poids du pâton réfrigéré : 4 kg max  
Tables inox 18/10 démontables  
Abaisse : 32 à 0.5 mm  
Cylindres  $\varnothing$  80 mm  
Nettoyage facile  
Laminage par action manuelle

Table top machine

Working width : 500 mm  
Dough piece weight : 4 kg max  
Removable 18/10 stainless steel flaps  
Lowering : from 32 to 0.5 mm  
Cylinders  $\varnothing$  80 mm  
Easy cleaning  
Manual sheeting



Dimensions

A : 240 mm  
B : 310 mm  
C : 675 mm  
D : 835 mm  
E : 790 mm

Poids / Weight

24 kg

PAS DISPONIBLE AVANT 2025  
NOT AVAILABLE BEFORE 2025